

## TME's new *Intelligent* Package Test System

# BT *Integra-Pack*®

The TME BT *Integra-Pack*® is a bench-top, high-resolution (0.001 psig) test instrument with a small footprint and user-friendly ease of operation. **Electronic pressure and flow controls** provide precise and repeatable test conditions, while **automatic and high flow output** allow testing of large porous packages. Applications cover a range of flexible or rigid, porous and non-porous, open or sealed packages.

### Automatic or Manual Parameter Definition

The intelligent *BT Integra-Pack* will test any package in automatic mode, with no need to input test parameters. However, its sophisticated nature is combined with a manual mode that lets the user input parameters such as ramp rate control and back pressure drop sensitivity. This allows testing of special configurations or types of packages or perform specific research and data-gathering activities.

### Icon-based, Touch-Driven Color Display

The touchscreen color display provides easy, clear navigation through the wide variety of data handling and review screens. Clearly defined icons make it easy to choose test modes, move from automatic to manual test settings, view test results in numeric and/or graphical format, and securely handle accumulated data.

**The BT *Integra-Pack* is a definitive step forward for traditional burst testing. A completely integrated process control tool, the instrument is not only valuable at the point of testing, but is also able to transmit your data from direct process control to your quality department, making it a quality control tool as well. Its objective is to enable you to produce a package that is as valid as the product enclosed.**



### Compliance to Standards:

ASTM F-2054, F-1140, F-2095

ISO-11607

FDA CFR 21 Part 11

### Standard Test Modes:

Burst Test

Creep Test

Creep-to-Failure Test

Pressure Decay Leak Test

### Standard I/O Functions:

USB connection to PC, LAN,  
or printer

Flash drive enabled for almost  
unlimited data storage

Remote instrument control

TMElectronics, Inc.

45 Main Street, Boylston, MA 01505 USA

800-370-0501 or 508-869-6400

## Technical Specifications: BT Integra-Pack©

Dimensions..... 10" X 13"x 7" H (25.4 x 33 x 18 cm)  
 Weight.....12.5 lbs. (5.6 kg)  
 Power Supply Voltage.....100 to 230 VAC 50/50 Hz, 45 watts max  
 5 watts in Standby mode  
 Air Supply Pressure.....60 to 120 psig (4.0 to 8.0 bar),  
 Instrument Quality Air  
 Controls.....Electronic Pressure Control, Illuminated  
 Start/Stop Switch, Key Lock, Power ON/OFF Switch  
 Test Modes..... Burst, Creep, Creep-to-Failure, Pressure Decay Leak  
 Display.....Multicolor 5.7" QVGA, Touchscreen  
 Units of Measure.....PSI / InH2O / mbar / kPa / InHg  
 Memory Capacity ..... 32 Mbytes  
 Expandable Memory, Internal SD Slot (optional)  
 Measuring Range .....5 InH2O to 50 PSI (12.5 to 3450 mbar)  
 Measuring Resolution..... BURST: 0.01 psi (0.3 InH2O) or 0.7 mbar  
 LEAK (Pressure Decay): 0.001 psi (0.03 InH2O) or 0.07 mbar  
 Communication (I/O).....USB Type A (x2)  
 VGA D sub 15, Monitor  
 Network LAN (RJ-45)  
 DB9 - Serial RS-232  
 USB Slave for PC, Type B  
 Calibration.....NIST Traceable  
 Standards.....ASTM F-1140, F-2054, F-2095  
 Peripheral I/O: .....8 Opto Outputs, 8 Inputs, 3 Digital I/O

**TM Electronics' Technical Specialists are highly experienced and ready to assist you in determining and solving your leak, flow and package testing needs and in getting the most out of your test system.**

**In addition to our wide range of package testing accessories, our Design Engineering team can provide you with help in addressing unique package testing situations and requirements.**

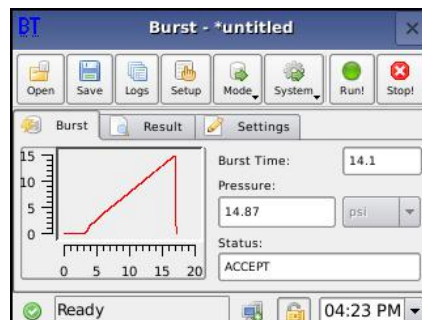
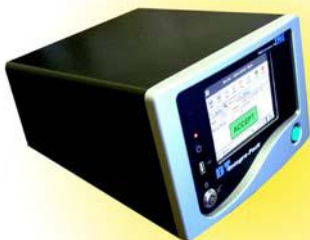
**Visit us on the web at [www.tmelectronics.com](http://www.tmelectronics.com) for more information on the technology of leak, flow and package testing and how we can best help you.**

## Standard Features

- Complies with standards for all commonly-used Seal Strength and Package Integrity tests
- Automatic Burst Test Mode
  - o Results right out of the box, no lengthy setup
  - o Senses package size during prefill
- Manual Burst Test Mode
  - o Multiple levels of control for optimal test results: Ramp Rate, Porous vs. Non-Porous Packages, Max/Min Acceptance Limits, Pressure Drop Sensitivity
- High Performance
  - o Higher Pressure Resolution (0.01 psi burst, 0.001 leak)
  - o Automatic Regulator (fast pressure setting)
  - o High Flow Capacity (up to 15 CFM)
  - o Low Pressure Sensitivity at 5 InH2O
- Advanced, user-defined interface compatible with USB keyboards, mice, bar code readers
- Low Power Stand-by Mode for energy conservation
- Graphical test plot display for leak, burst and creep tests
- High Resolution Color LCD Display with Touchscreen
- Standard and Metric units
- Test data exporting to PC using Flash Drive

## Accessories

- Tilting Stand
- Internal SD Card for Expanded Storage (Internal)
- TS-02 Closed Package Test Fixture
- Test Probes (various sizes available)
- TS-01 Open Package Fixture, 12" Jaw Width
- TS-04 Open Package Fixture, 24" Jaw Width
- Restraining Plate Fixtures
- LA-05 Filter Drying Assembly
- USB Printers
- Digital Flow Valves, Leak Orifices
- Custom Fixtures and Adapters for Your Application



TMElectronics, Inc.

45 Main Street, Boylston, MA 01505 USA

800-370-0501 or 508-869-6400

[sales@tmelectronics.com](mailto:sales@tmelectronics.com)

[www.tmelectronics.com](http://www.tmelectronics.com)